

Designed for Accessibility Engineered for Life

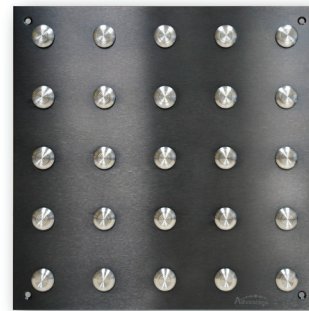
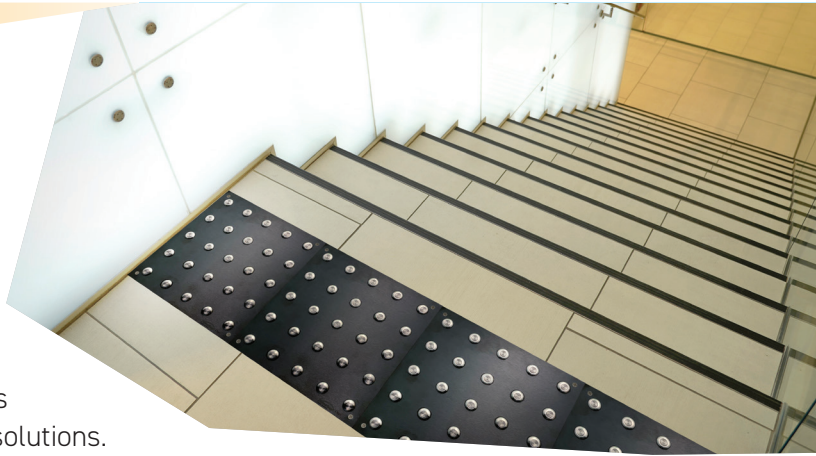
BLACK ANODIZED BASE

Advantage® ONE Plate Tactile Walking Surface Indicators (TWSI) have been designed for all interior accessibility solutions. Advantage ONE TWSI are machined from 316L Marine Grade Stainless Steel and welded to a solid Stainless Steel Plate that has been anodized to a "Midnight Black" shade. The black anodized base provides strong contrast to light surfaces, as is required by the CSA standard for Accessible Design (CSA B651) and exceptional appearance. Besides being aesthetically pleasing these plates are strong, durable, and incorporate an integral texture in the stainless steel to provide permanent slip resistance. Our products have undergone a rigorous series of tests to ensure that they meet and exceed guidelines developed by the AODA, CSA, ISO, and provincial and national building codes. Advantage® ONE Plate TWSI products offer the lowest lifecycle cost, and eliminates long term safety concerns and accessibility limitations. Tactile Walking Surface Indicators (TWSI) products for the following and many more applications:

- Revolving Door Approaches
- Wheelchair Ramps
- Parking Areas
- Top of Stair Landings
- Turnstile and Gate Access
- Escalator Approaches
- Transit Platforms
- Multi-Modal Transit Stations
- Top of Stair Landings

COMPLIANCE

Kinesik Engineered Products Incorporated is in full compliance with Canadian Accessibility Codes. The full product range of Kinesik tactile walking surface indicators meet the most recent AODA, CSA, ISO, provincial and national building codes. Kinesik Engineered Products Incorporated is your one stop source for all tactile systems for internal and external applications. Only Kinesik provides a complete range of products designed for safety, convenience and code compliance.



PRODUCT FEATURES

- 316L, Marine grade stainless steel
- Innovative adhesive capture design
- Optimum anti-slip design
- Resistant to heavy traffic abuse and maintenance machinery
- 5 year manufacturer's warranty

Domes and Bars come in the following styles:

PLATE DOMES

- Concentric Rings Pattern
- Crosshatch Pattern
- Carborundum - Non-Slip

PLATE BARS

- Crosshatch Pattern
- Carborundum - Non-Slip
- Linear Grooves



PROFESSIONAL ASSOCIATIONS

Kinesik is proud to be a member of the following organisations



PRODUCT OPTIONS

- Stainless Steel
- Black Carborundum

PLATE SPECIFICATIONS

Advantage® ONE (TWSI) meets the following ASTM specifications: A182, A193, A276, A313, A314, A320, A479, A493 and A580.

| Test | Description | Requirements |
|----------------|--------------------------------|---------------|
| ASTM C 1028-96 | Static Coefficient of Friction | ≥ 0.8 wet/dry |
| ASTM D 543-95 | Chemical Resistance | No effect |
| ASTM D 2486-00 | Abrasive Wear Gardener Tester | No wear |
| ASTM C 501-84 | Abrasive Wear Taber Tester | No wear |
| AASHTO HB-17 | Wheel Load Tests | No effect |
| ASTM B 117-03 | Salt Spray (300 hrs) | No effect |

APPLICATIONS

- | | |
|---|---|
| Tactile Attention Indicator Truncated Domes | <ul style="list-style-type: none"> • An unprotected drop off edge, such as a transit platform where the change in elevation is greater than 250mm or the slope is steeper than in a ratio of 1:3 (33%). • The unprotected edges of a reflecting pool. |
| Tactile Direction Indicator Guidance Bars | <ul style="list-style-type: none"> • Located in large open floor in large open floor areas, such as shopping malls or transportation terminals, to facilitate wayfinding by indicating the primary routes of travel. • The indicated routes should lead from the entrance to major destinations, such as an information kiosk, registration desk, stairway, elevator, escalators, or to store or service doors. |

ADVANTAGE ONE DOME PLATE SIZES

| DOMES PLATE SIZE | PRODUCT CODE | CENTRE DOME PATTERN |
|--|--|---------------------|
| 12" x 12" (305x305mm) 12" x 24" (305x610mm) | ADV-PB-21431-BK ADV-PB-21331-BK | Cross Hatch |
| 12" x 12" (305x305mm) 12" x 24" (305x610mm) | ADV-PB-31431-BK ADV-PB-31331-BK | Linear Grooves |
| 12" x 12" (305x305mm) 12" x 24" (305x610mm) | ADV-PB-51431-BK ADV-PB-51331-BK | Black Carborundum |

BLACK ANODIZED BASE



Concentric Rings

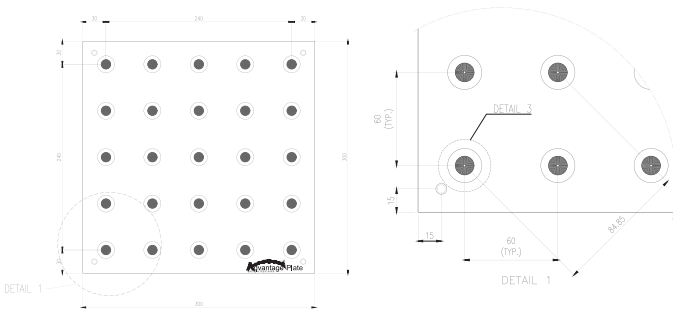


Black Carborundum

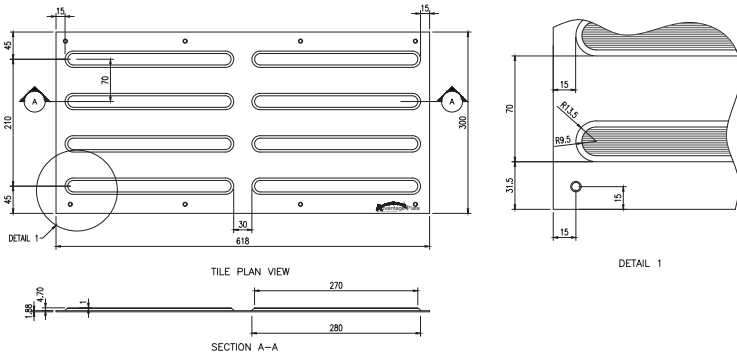


Cross Hatch

Tactile Walking Surface Indicator (TWSI) with Truncated Domes



Tactile Walking Surface Indicator (TWSI) with Wayfinding Bars



ADVANTAGE ONE DOME PLATE SIZES

| DOMES PLATE SIZE | PRODUCT CODE | CENTRE DOME PATTERN |
|--|--|---------------------|
| 12" x 12" (305x305mm) 12" x 24" (305x610mm) | ADV-PD-11451-BK ADV-PD-11351-BK | Concentric Rings |
| 12" x 12" (305x305mm) 12" x 24" (305x610mm) | ADV-PD-21421-BK ADV-PD-21321-BK | Cross Hatch |
| 12" x 12" (305x305mm) 12" x 24" (305x610mm) | ADV-PD-51421-BK ADV-PD-51321-BK | Black Carborundum |